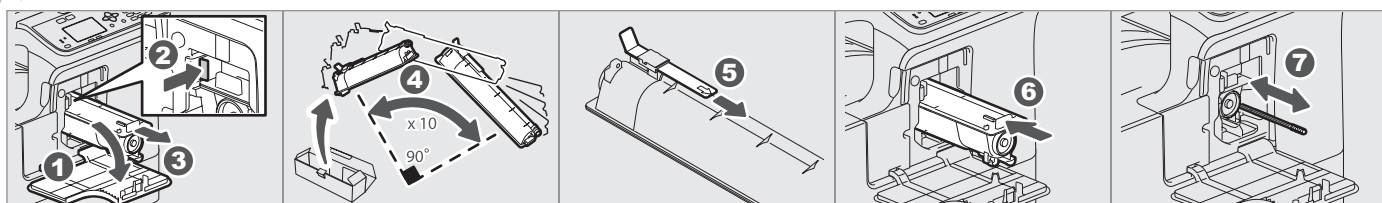


# Troubleshooting

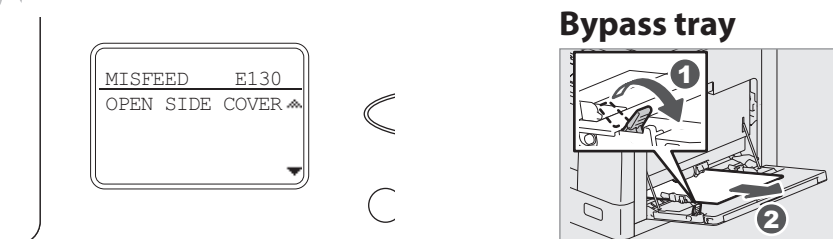
## Toner empty

User's Guide: Chapter 6

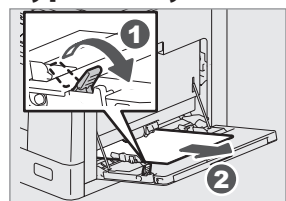


## Paper misfeed

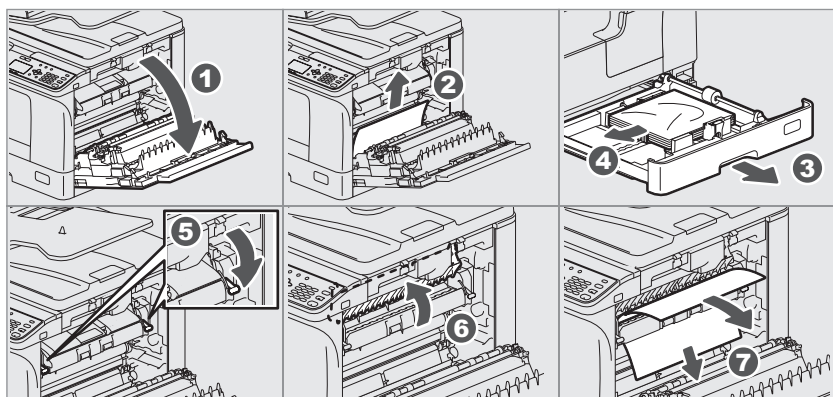
User's Guide: Chapter 6



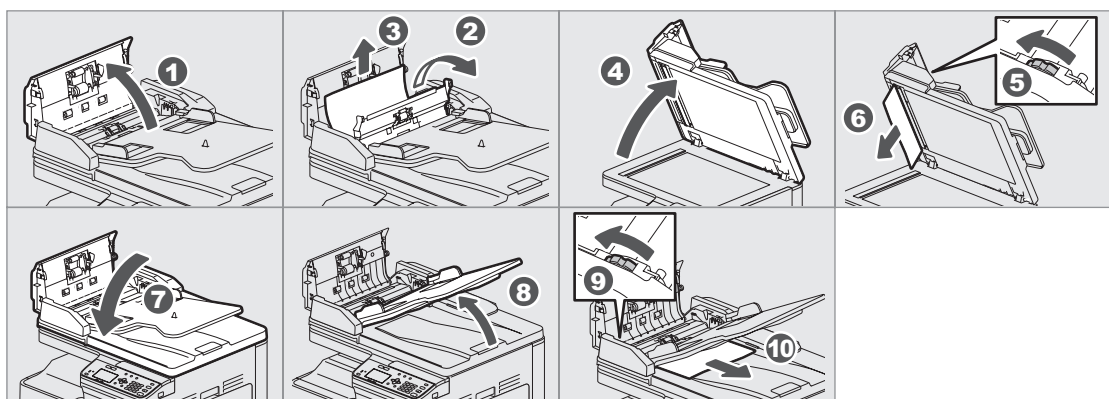
### Bypass tray



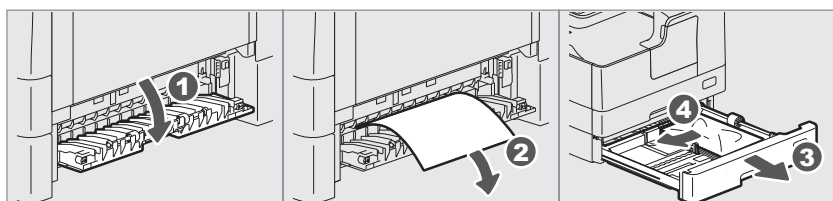
### Side cover



### RADF



### PFU

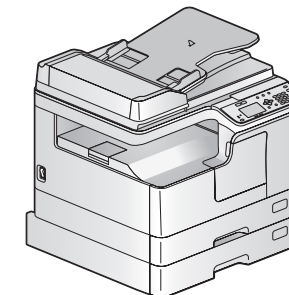


TOSHIBA

MULTIFUNCTIONAL DIGITAL SYSTEMS

e-STUDIO2523A/2523AD

e-STUDIO2323AM/2823AM



# Quick Guide

This manual describes the components, preparations, basic operations, and troubleshooting for the equipment. **Before using the equipment, read the Safety Information (Printouts).** The DVD bundled with the equipment contains the manuals (PDF file).

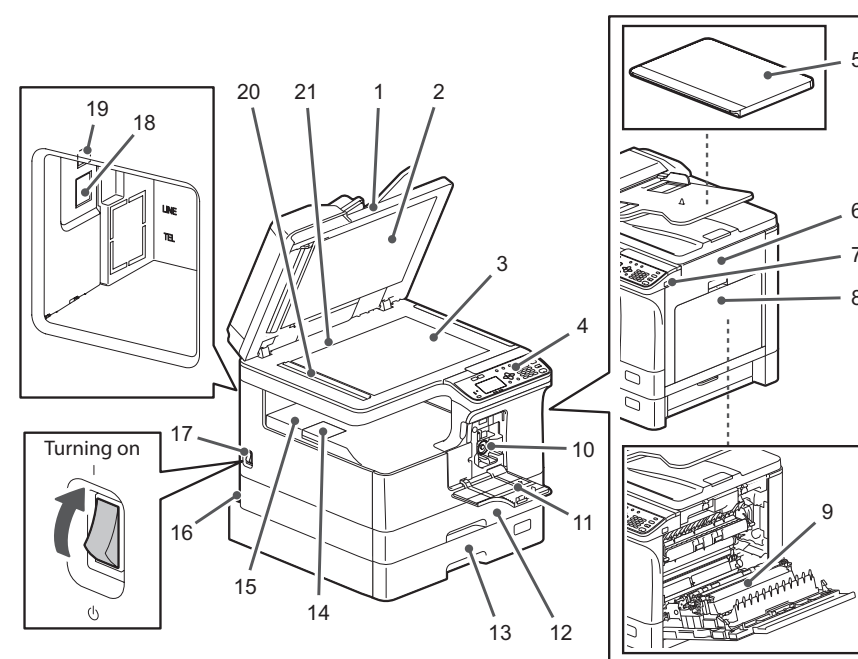
### Trademarks

Company names and product names in this manual are the trademarks of their respective companies.

## Component Description

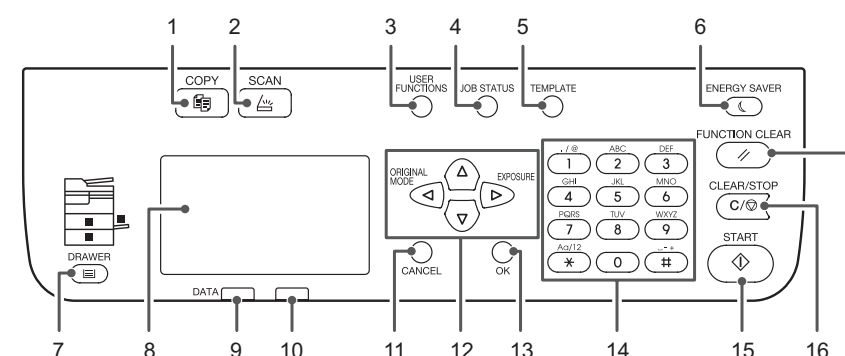
### Equipment

User's Guide: Chapter 1



1. Reversing Automatic Document Feeder (RADF, optional)
2. Platen sheet
3. Original glass
4. Control panel
5. Platen Cover (optional <included as standard in some regions>)
6. Side cover
7. USB port
8. Bypass tray
9. Automatic Duplexing Unit (ADU, optional only for e-STUDIO2523A)
10. Toner cartridge
11. Front cover
12. Drawer
13. Paper Feed Unit (PFU, optional)
14. Paper exit stopper
15. Receiving tray
16. AC-IN terminal (rear)
17. Power switch
18. Network interface connector (only for e-STUDIO2323AM/2823AM)
19. USB terminal (4-pin)
20. Scanning area
21. Original scale

### Control panel



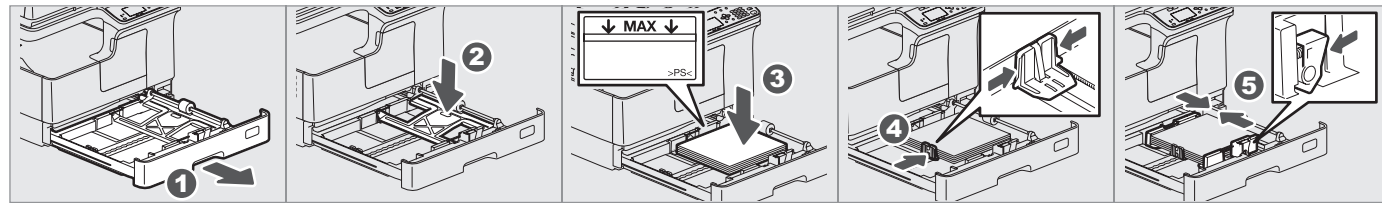
1. COPY
2. SCAN
3. USER FUNCTIONS
4. JOB STATUS
5. TEMPLATE
6. ENERGY SAVER
7. DRAWER
8. LCD screen
9. DATA
10. Alert lamp
11. CANCEL
12.  $\Delta \nabla \triangleleft \triangleright$
13. OK
14. Digital keys
15. START
16. CLEAR/STOP
17. FUNCTION CLEAR

# Before Use

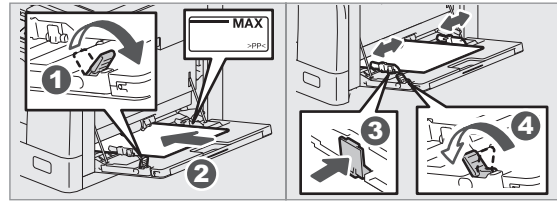
## Loading paper

User's Guide: Chapter 1

### Drawer



### Bypass tray



**To set paper size of Drawer**  
When you load paper in the drawer, a pop-up window appears. Follow the instructions and set the paper size. (When the "POP UP" function is set to "ENABLE")

## Driver installation

Software Installation Guide: Chapter 2

Use the installer in the DVD to install the driver. Installing the driver requires the administrator authority.

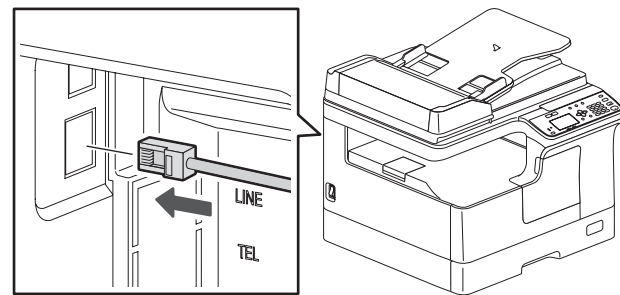
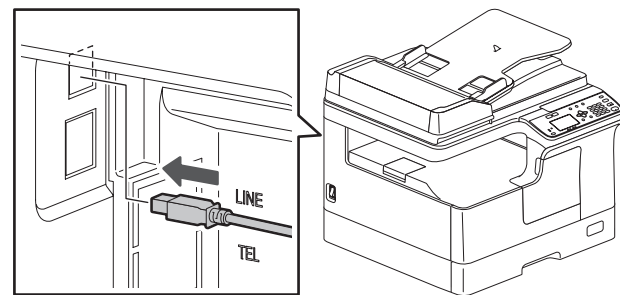
**Note when installing from installer**

- Close all running applications.
- If the installer does not automatically start, double-click "Setup.exe" in the DVD.

### Connecting computer

Before installing the drivers, connect the equipment and the computer with a USB cable or Network interface cable\*.

\* Only for e-STUDIO2323AM/2823AM



### Using installer

1. Close all running applications.
2. Make sure that the equipment is turned on.
3. Insert the DVD into the computer.
4. Double-click "Setup.exe".
5. Follow the on-screen instructions.

### Using Plug and Play

1. Turn on the equipment.
2. Follow the on-screen instructions.

Printer and scanner functions are available.

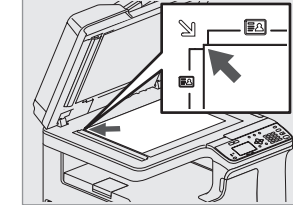
# Basic Operations

## Copier

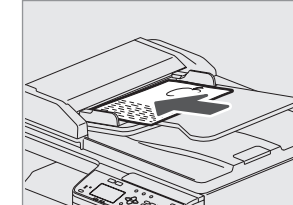
User's Guide: Chapter 2

1. Place the original(s).

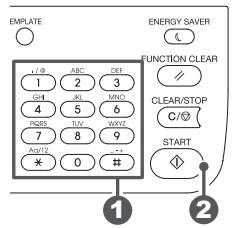
### Original glass



### RADF



3. Enter the number of copies with the digital keys 1, and then press [START] 2 to copy.



2. Press [COPY] and make the copy settings.



- To stop copying**  
Press [CLEAR/STOP]
- To reset settings and LCD screen after copying**  
Press [FUNCTION CLEAR]
- Shortcut keys**  
Press <: "ORIGINAL MODE"  
Press >: Europe and the Americas "EXPOSURE", Except Europe and the Americas "ID CARD"

## Printer

User's Guide: Chapter 3

1. Select [Print] from the application's [File] menu.
2. Select your printer 1, and then click [Preferences] 2.



3. Make print option settings, and then click [OK].
4. Click [Print] ([OK]).

## Scanner

User's Guide: Chapter 4

### Scan to USB Memory

1. Place the original(s).
2. Press [SCAN].
3. Connect the USB storage device to the equipment and wait a few seconds.
4. Press ∇ or ∆ to select "USB", and then press [OK].
5. Press > to make the scan settings as required.
6. Press [START] to scan your documents.

### TWAIN Scan

1. Place the original(s).
2. Launch a TWAIN-compliant application.
3. Select the device from the application's [File] menu.
4. Select the menu to scan from the application's [File] menu.
5. Make the scan settings, and then click [Scan].

## Templates

User's Guide: Chapter 2, 4

### Registering a template

1. Press [COPY] or [SCAN].
2. Make settings for the functions to register as a template.
3. Press [TEMPLATE].
4. Press ∇ or ∆ to select "REGISTRATION", and then press >.
5. Press ∇ or ∆ to select a template, and then press [OK].

### Recalling a template

1. Press [COPY] or [SCAN].
2. Press [TEMPLATE].
3. Press ∇ or ∆ to select "RECALL", and then press >.
4. Press ∇ or ∆ to select the template, and then press [OK].